

SQUAT BOX PRO

PORTABLE BELT SQUAT STATION - MX1182XL



The BodyKore Squat Box Pro delivers the power of a full-size belt squat machine in a portable, space-saving design. Engineered for serious strength training, it allows users to lift up to 70% of their bodyweight plus 270 lbs of plate-loaded resistance, ensuring stability and control for heavy lifting.

Featuring removable weight horns for added security, a stabilizing handlebar for extra balance, and multiple

cable attachment options, the Squat Box Pro is perfect for athletes, lifters, and rehab-focused training—allowing for squats, deadlifts, presses, rows, and more without spinal compression.

Includes: Squat Box Pro, weight horns, stabilizing handlebar, custom belt squat belt, 4' cable with carabiner, 1' extension cable, 2' extension cable, and rotating straight bar.



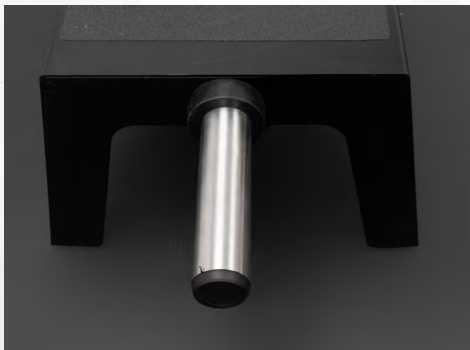
Dimensions
53" x 25" x 48"

Weight
50lbs

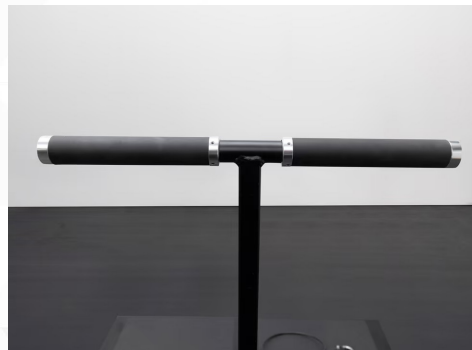
SQUAT BOX PRO

PORTABLE BELT SQUAT STATION - MX1182XL

Warranty	
STRENGTH WARRANTY (NORTH AMERICA ONLY)	
FRAME (NOT COATINGS)**	LIFETIME
WEIGHT STACKS	10 YEARS
PULLEYS	10 YEARS
PIVOT BEARINGS	10 YEARS
OTHER ITEMS NOT SPECIFIED	3 YEARS
LABOR	3 YEARS
UPHOLSTERY / CABLES / SPRINGS / GRIPS	1 YEAR
ACCESSORIES	6 MONTHS



Removable Weight Horns
Hold up to three 45 lb plates on each side.



Stabilizing Handlebar Attachment
For extra balance support.



Straight Bar + Cable Pulley Extension



Stabilizing Handlebar Attachment
Can be simply added or removed.